

SDR Series regulator



Ordering code

SDR 200 08 L □ □ 2 T							
①		②		③		④	
⑤		⑥		⑦		⑧	
① Model	② Series code	③ Port size	④ Type code				
SDR: SDR series regulator	100: 100 series	M5: M5 06: 1/8"	Blank: Standard L: Lower pressure				
	200: 200 series	06: 1/8" 08: 1/4"					
⑤ Accessories	⑥ Pressure gauge	⑦ Scale	⑧ Thread type				
Blank: Bracket J: No bracket	Blank: Pressure gauge N: No pressure gauge	2: psi [Note]	T: NPT(Scale: psi)				

[Note] When select no pressure gauge, this code is blank.

Specification

Model	SDR100M5	SDR10006	SDR20006	SDR20008	SDR100M5L	SDR10006L	SDR20006L	SDR20008L
Fluid	Air							
Pressure range	7~130psi(0.05~0.9MPa)				4~57psi(0.03~0.4MPa)			
Max. pressure	145psi(1.0MPa)							
Proof pressure	215psi(1.5MPa)							
Temperature range	-20~70°C							
Port size [Note1]	M5	1/8"	1/4"	M5	1/8"	1/4"		

[Note1] NPT thread is available.

Product feature

1. Back pressure structure, compact type, cost-effective, installation time saving.
2. Broad regulating range; low-pressure type is optional other than the standard type; stable output pressure; applicable to situation which has low expectation on output pressure but high expectation on performance and cost-effectiveness.
3. Single unit installation; easy to mount.

Attentions of application

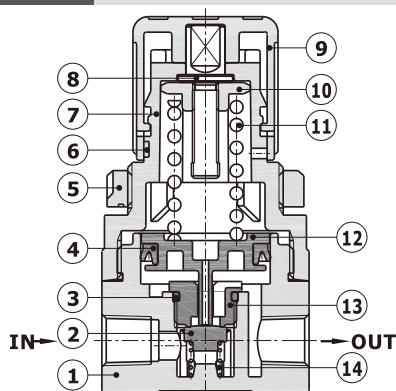
Unlock the regulating knob before pressure adjustment, then lock it after the adjustment. Otherwise, may cause the regulating knob damage or the outlet pressure change.

1. Pull the regulating knob to unlock, when the orange marking ring below the regulating knob appears, indicating that the regulating knob is unlocked.
2. Push the regulating knob to lock, when the orange marking ring below the regulating knob disappears completely, indicating that the regulating knob is locked.



SDR Series regulator

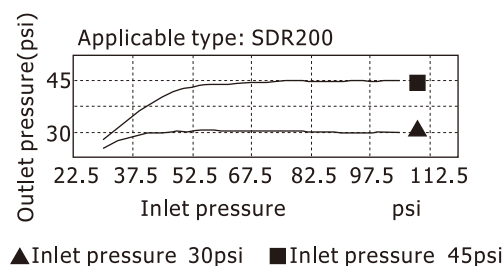
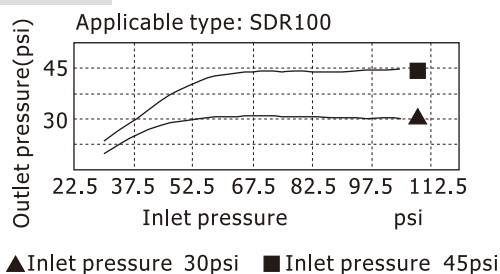
Inner structure



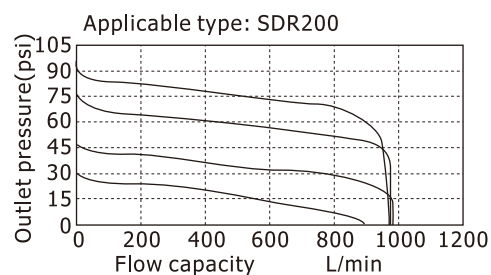
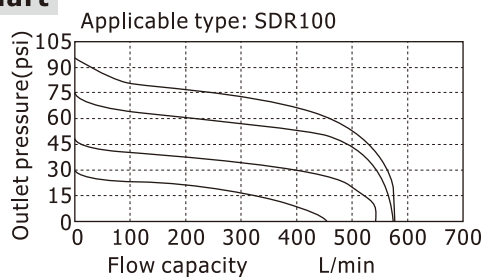
No.	Item	No.	Item
1	Body	8	Adjusting pillar
2	Needle gasket	9	Adjusting button
3	O-ring	10	Adjusting nut
4	O-ring	11	Adjusting spring
5	Fixed ring	12	Piston rod
6	Identification ring	13	Adjusting seat
7	Adjusting seat	14	Return spring

Pressure and feature of flow

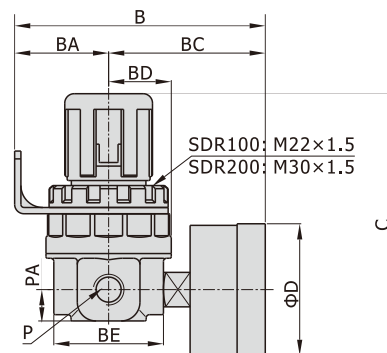
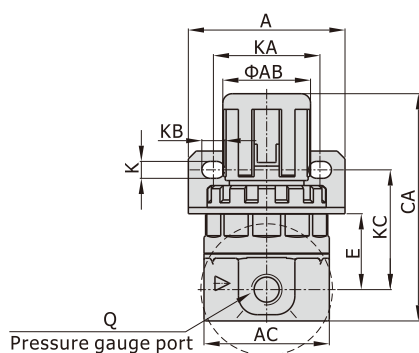
Pressure chart



Flow chart



Dimensions



[Unit: mm]

Model\Item	A	AB	AC	B	BA	BC	BD	BE	C	CA	D	E	K	KA	KB	KC	P	PA	Q
SDR100=M5	35	20	32	65.5	26	39.5	14.5	29	62.5	54.5	33	17	5.5	22	7	29	M5	7.5	1/16"
SDR100=06	35	20	32	65.5	26	39.5	14.5	29	62.5	54.5	33	17	5.5	22	7	29	1/8"	7.5	1/16"
SDR200=06	50	28	40	80	30	50	20	35	83.5	72.5	42	24	5.5	34	7.5	38	1/8"	10	1/8"
SDR200=08	50	28	40	80	30	50	20	35	83.5	72.5	42	24	5.5	34	7.5	38	1/4"	10	1/8"

Note: Bracket and pressure gauge are optional.